

**Planning authority:** Kerry Co. Council

**Unique identity number:** RPS KY-056-034

**Address:** Steelroe, Killorglin

**Description:** Detached Single storey six bay cottage with asbestos roof.

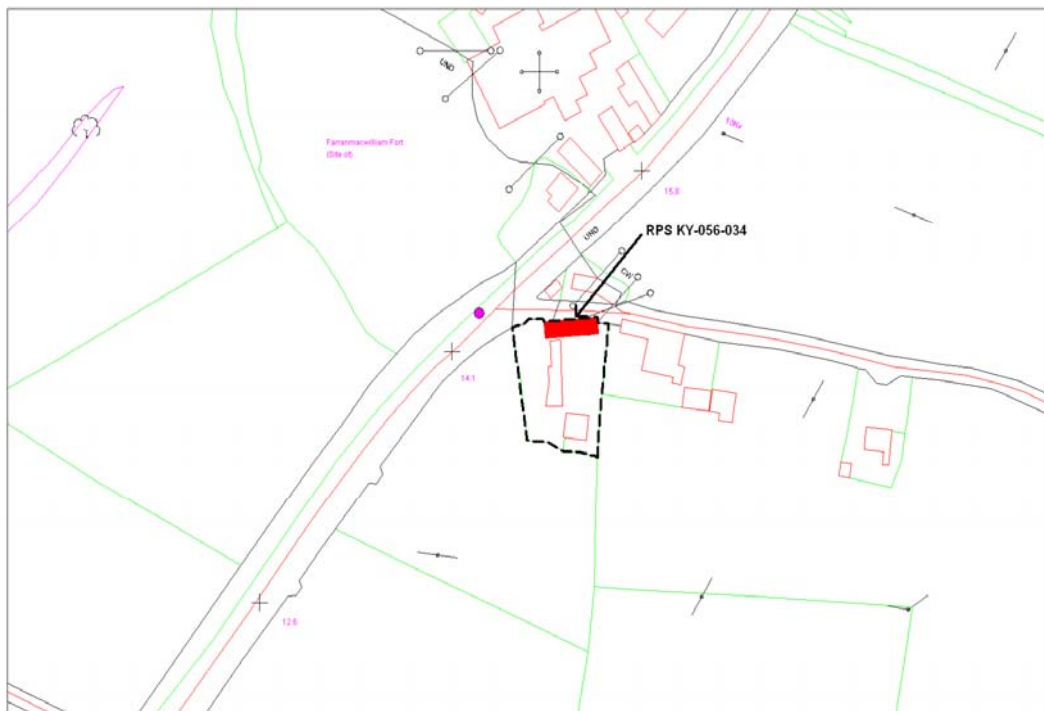
**Ordnance Survey Map:** 5933D

**National Grid co-ordinates:** 79,994m, 97,274m

**Special interest:** Architectural, historical

**Site features:**

**Location Map** (not to scale)



**Appraisal:** An early nineteenth century single storey vernacular building which has retained much of its early appeal, fabric and character. The long low massing and the diminutive proportions of the openings identify the vernacular tradition. Buildings of this type were once a ubiquitous feature of the Kerry countryside, but are now becoming increasingly rare. The original character has been preserved by the retention of such features as timber sash windows. This building has special architectural and social interest and should be included in the RPS.

