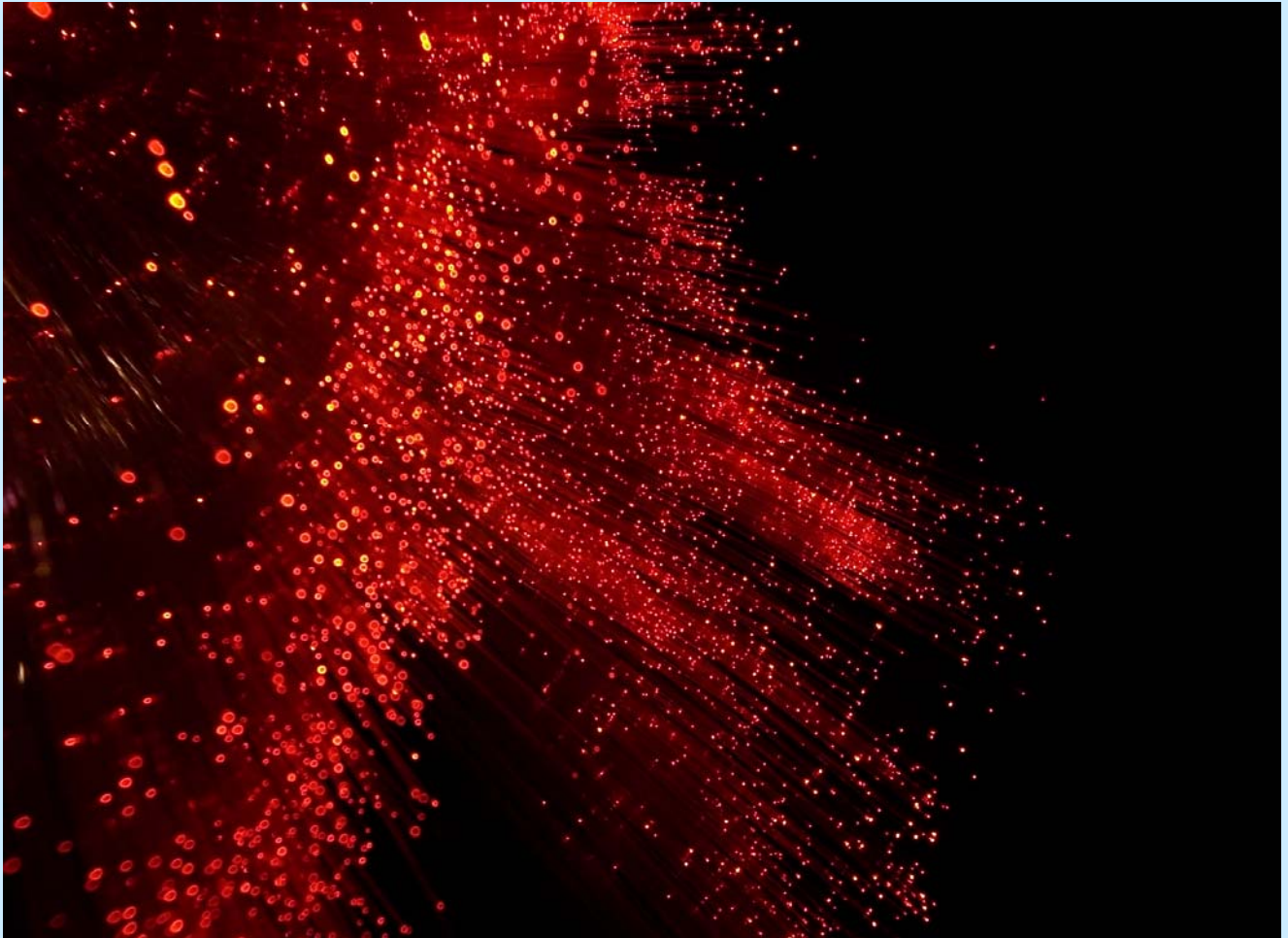




Kerry Regional Broadband Program 2007





The Metropolitan Area Networks for Kerry 2007

The Department of Communications Marine and Natural Resources have approved six towns in the current round of funding for Phase II.

These networks will provide an open access high speed Broadband infrastructure to each town allowing private operators to provide broadband services to large industry, small and medium enterprises and residential customers.





What is Broadband?

Simply put broadband is a faster means of moving information. Information can include pictures, files, emails, telephone calls, TV programmes – in fact almost any means of electronic communication you can think of.

There are many different types of broadband systems including “ADSL”, “Wireless”, “Satellite” and “Fibre”(the system in the MAN’s).

The principal difference between these is speed with fibre having almost limitless capacity.

These systems can be offered in combination or on their own.





Why do we need Broadband?

Reduces our peripheral status: Kerry is as close electronically to Delhi as Dublin.

Allows individuals and S.M.E.'s to make full use of the web.

Encourages new industry into the area. The IDA see the provision of “state of the art” communications as vitally important to attracting inward investment.

Improves competitiveness of existing industries. Better use of Information and Communications Technology has been identified as one of the key factors required to improve Ireland's productivity performance

Facilitates competition between telecom suppliers, leading to cheaper costs.





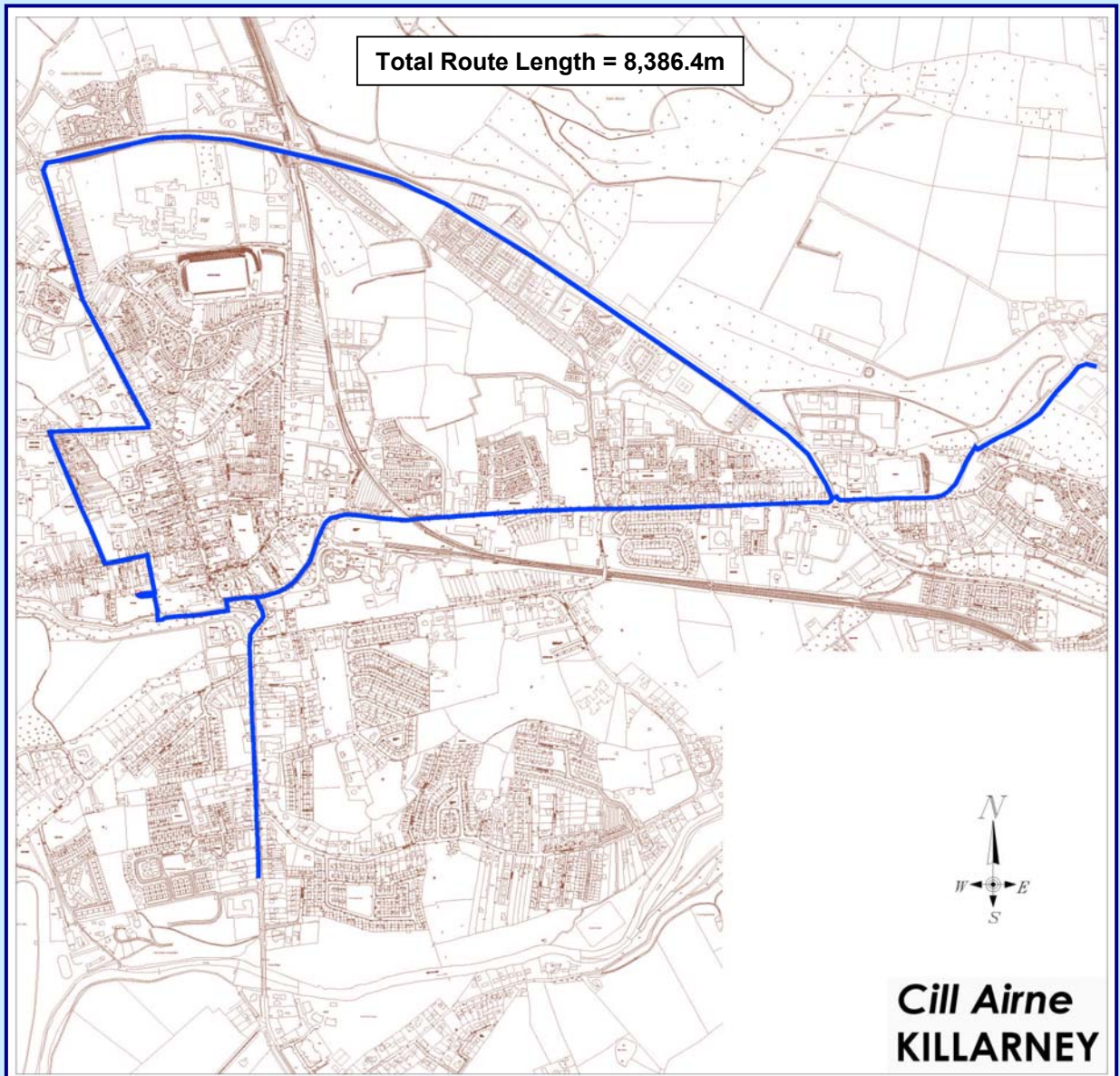
Current Status of the Project

- Design works are complete.
- Tendering for construction works is completed and a works contractor will be appointed shortly.
- In total over 38.72km of network is to be constructed in four of the six towns. The remaining towns of Dingle, Kenmare & Castleisland will be served by a wireless network.
- Construction of Fibre Networks will commence in all four towns at the same time.
- The wireless networks for Dingle & Kenmare will follow later.
- In Kerry works will start in early April '07, with route proving. These are small excavations to check where electrical, sewage and water services are.
- Main excavation of track through the town will also commence in early April '07.
- Main excavation works to be completed by the end of July '07.
- Commissioning of network will be completed by early October '07.



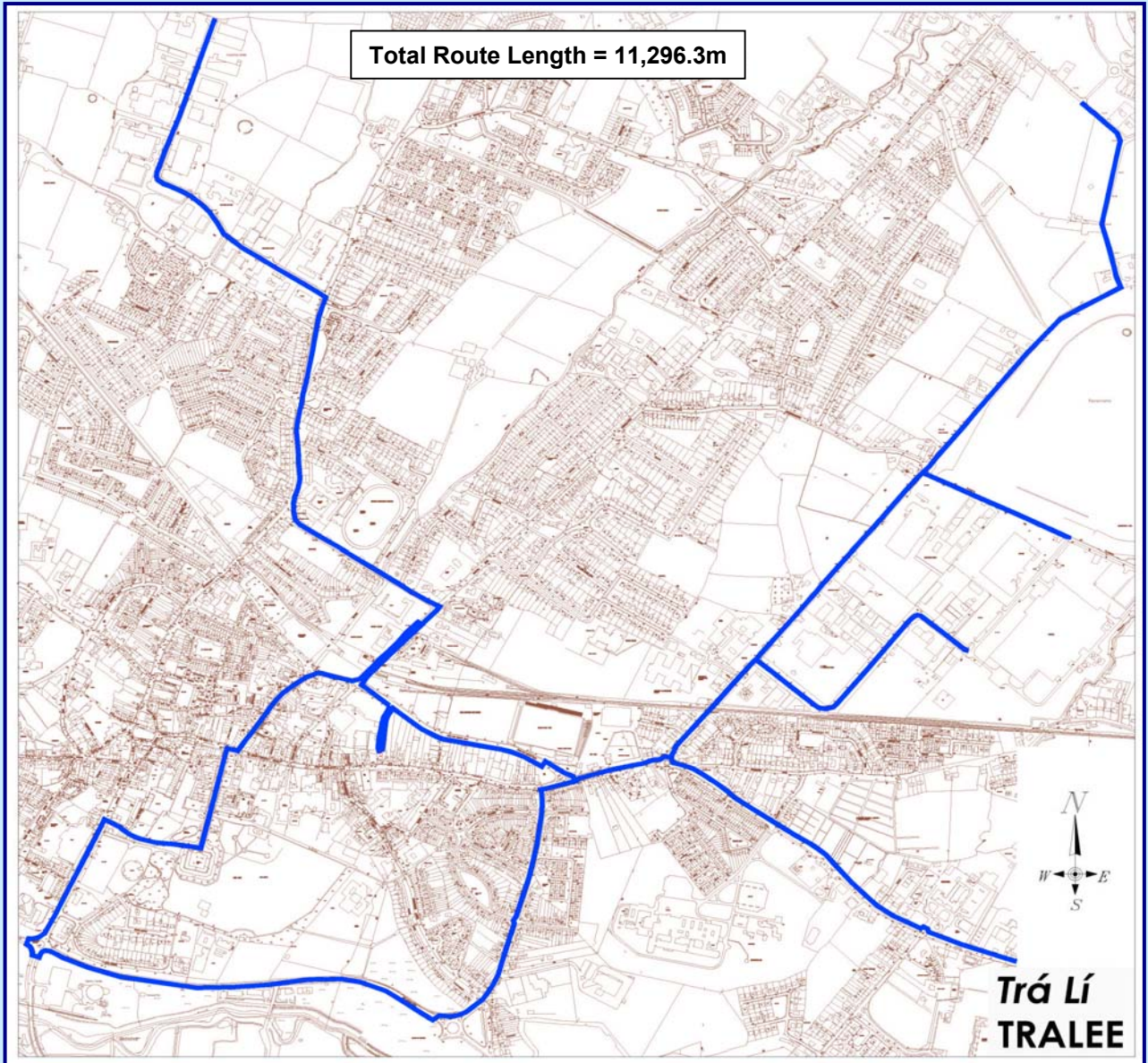


Killarney Town MAN Route Map



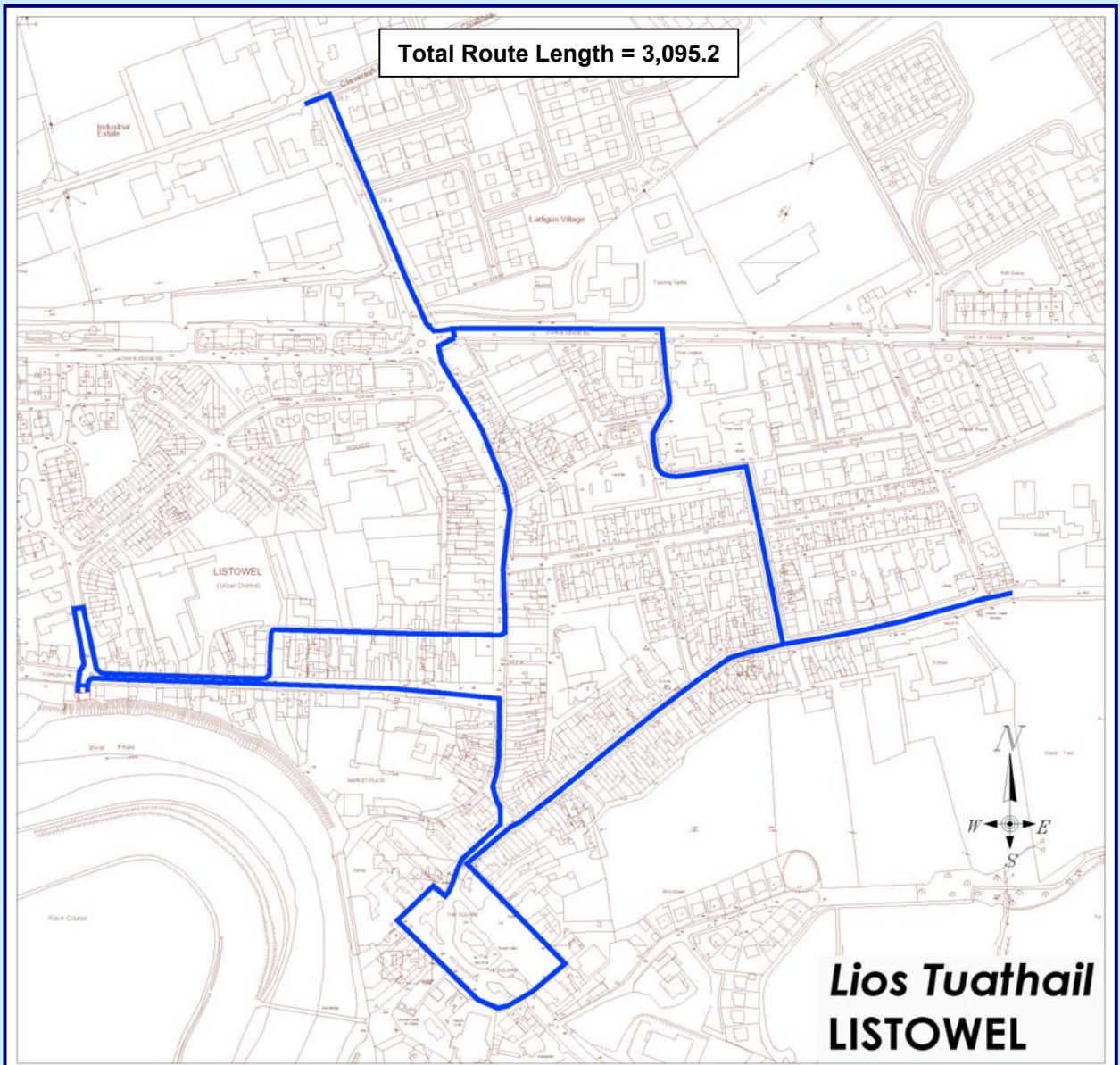


Tralee Town MAN Route Map



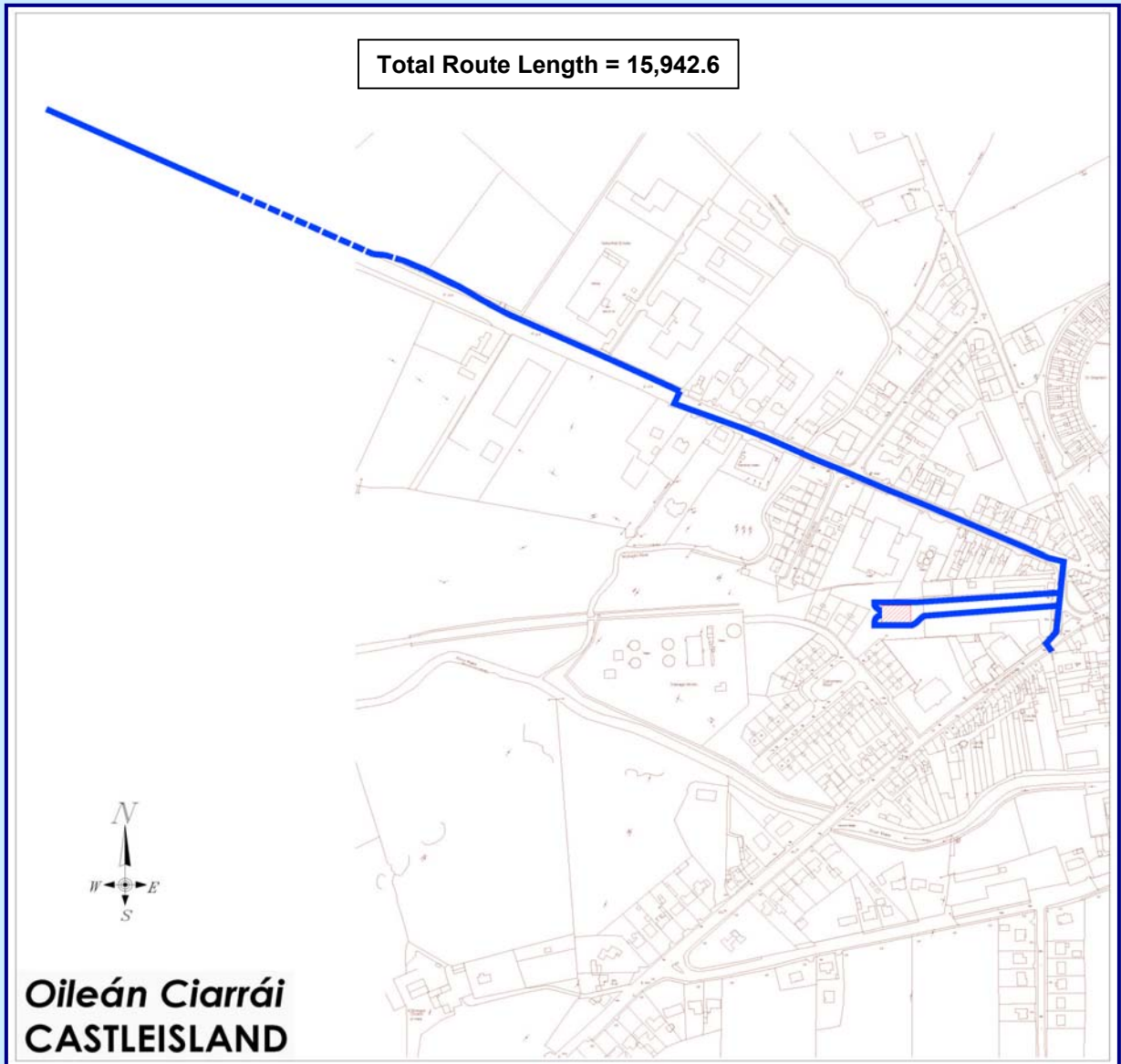


Listowel Town MAN Route Map





Castleisland Town MAN Route Map





Status of Wireless Broadband for Dingle, Kenmare & Castleisland

- Enter Text

Enter Text





Construction Methodology

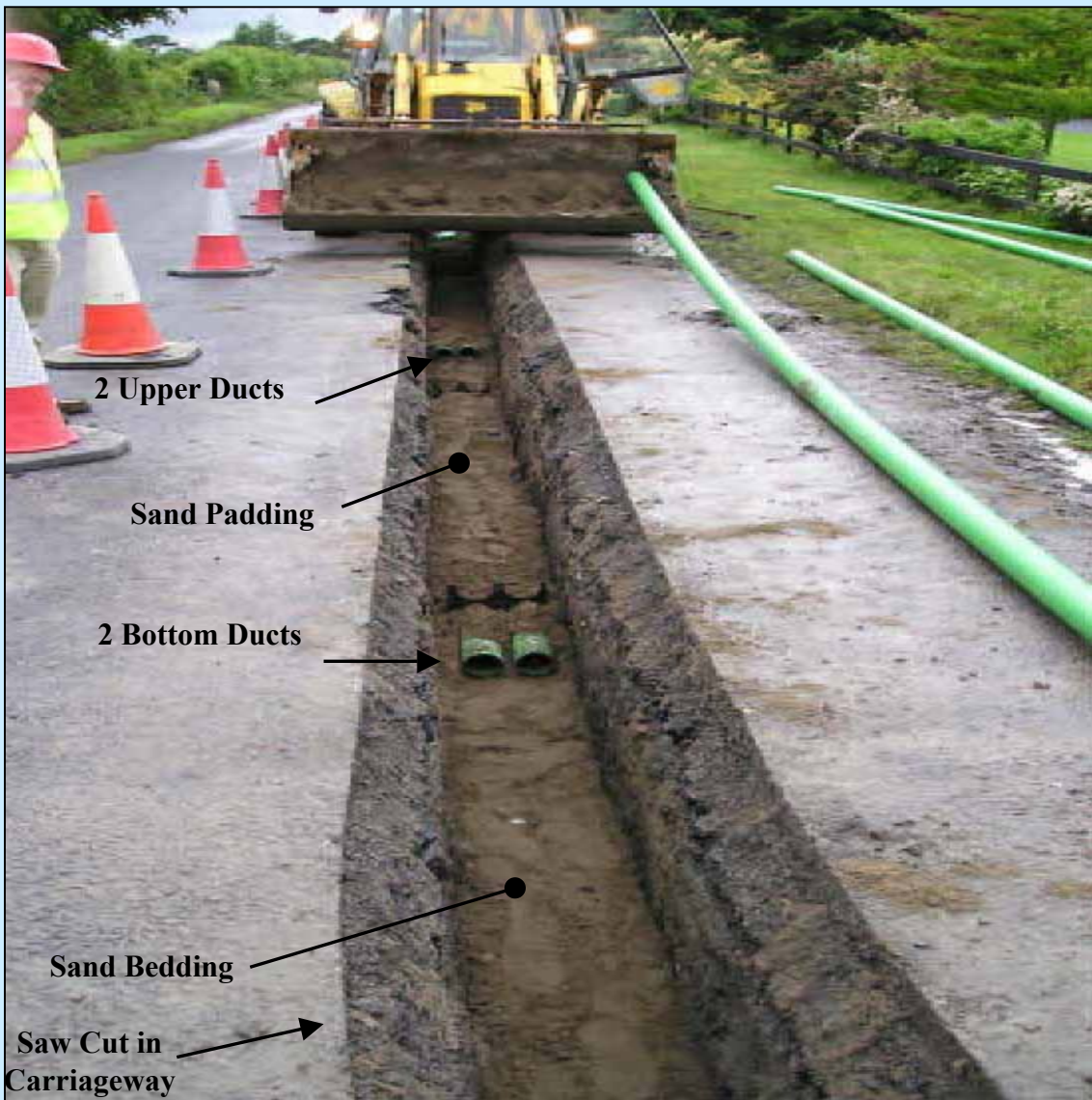
- A project management team has been established for each town to deal with safety, traffic management, reinstatement of roads and any other queries or concerns.
- Hours of work will be agreed between Kerry County Council and the contractor.
- Strict traffic and pedestrian management schemes will be implemented.
- Rate of excavation works will be of the order of 25-50 metres per day per crew. Typically 2 crews will be active in each town.
- There will be same-day reinstatement on the majority of road openings and no trench excavations will be left open.
- Updates will be announced on Kerry County Council's website, local radio and newspapers.
- A dedicated telephone number will be in place (to be advised) to deal with enquiries and comments from the public and business. Comments can also be emailed to broadband@kerrycoco.ie

Our overall objective is to construct the networks in a safe manner and to minimise disruption to the public and businesses



Typical

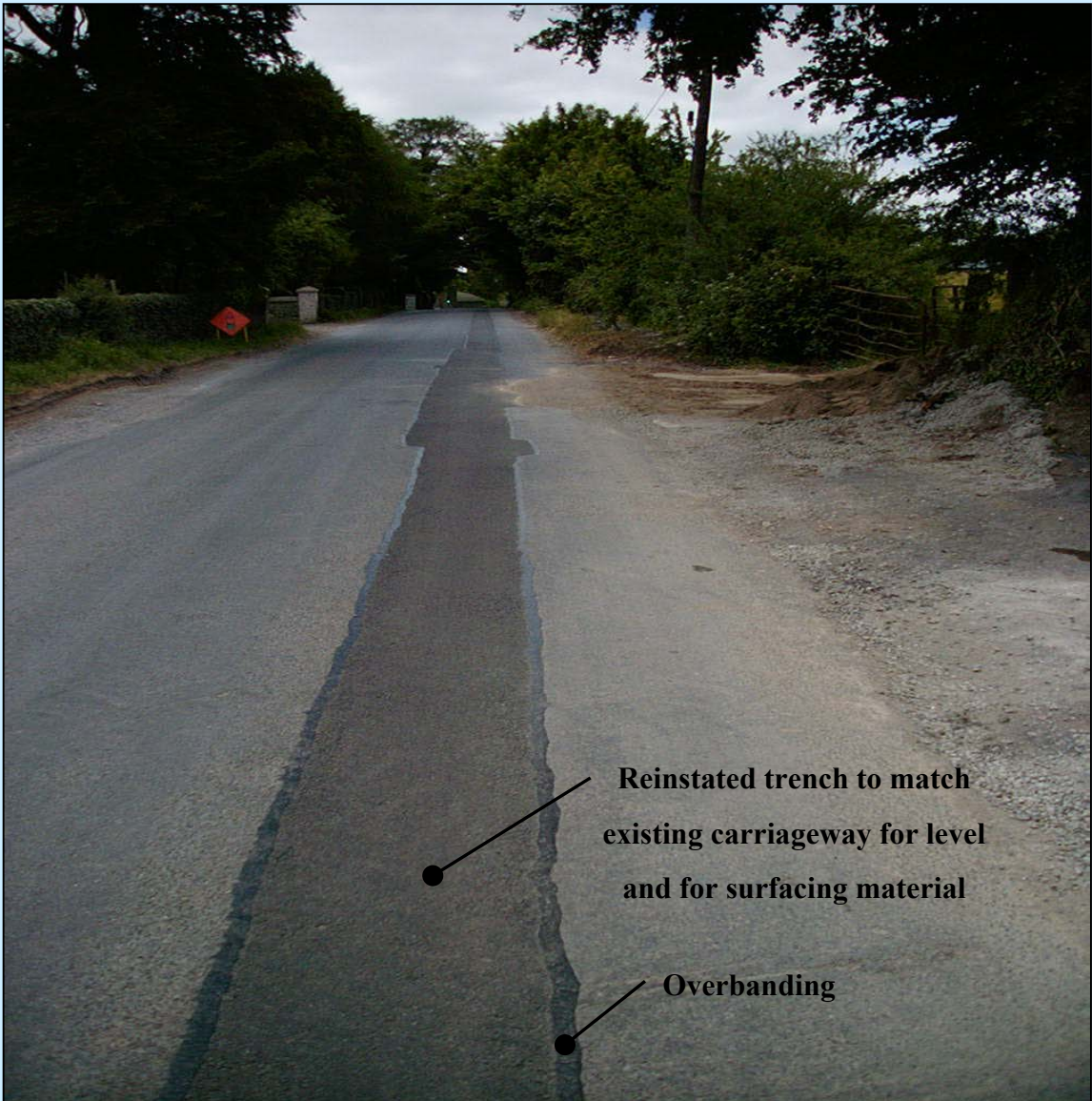
Construction Photographs – Excavation & Duct Laying





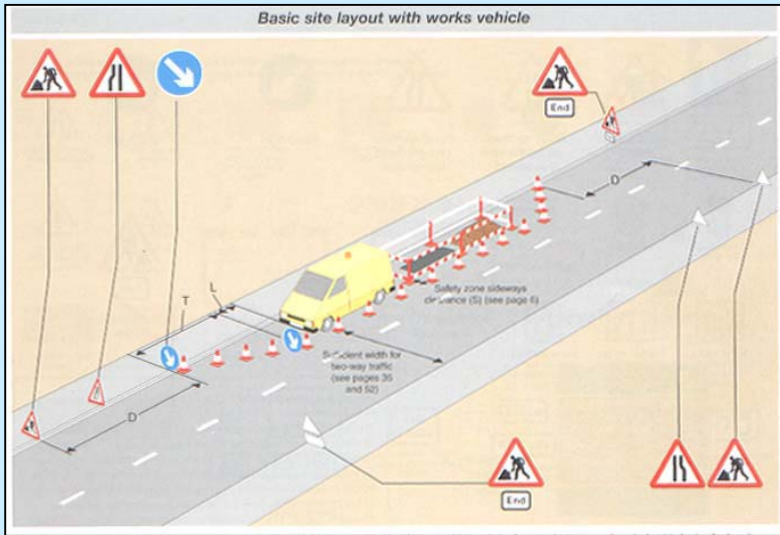
Typical

Construction Photographs - Reinstatement



Typical

Construction Photographs – Traffic Management





Project Organisation:

Kerry County Council

broadband@kerrycoco.ie



Project Management:

McMahon Design and Management Ltd.

Consulting Engineers – Project Managers



Works Contractor:

To be advised.





Further information:

- ***Kerry County Council:*** www.kerrycoco.ie
- ***Department of Communications Marine and Natural Resources:***
www.dcmnr.gov.ie/Communications/
- ***Broadband information:***
www.broadband.gov.ie
- ***National Development Plan***
www.ndp.ie
- ***The European Union:***
www.europa.eu

